



# Float switch

EN

- Instructions for Installation and use
- Installation with or without pivot joint
- Float switch for water top up, yellow, or dry run protection, red.

## OPERATING INSTRUCTIONS



 made  
 in  
 Germany

# WISY

## Rainwater Harvesting

# Float switch

For water feed (yellow) or  
for dry-running protection (red)

**Please read these instructions carefully before installing the float switch!**

Float switches for submersible use in storage tanks. Controls the potable water feed or turns off the pump in case of low water level and therefore protects the pump against dry-running.

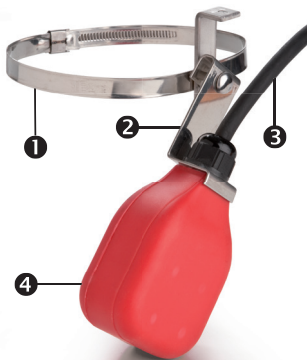
## Mechanical installation

### Installation without pivot joint

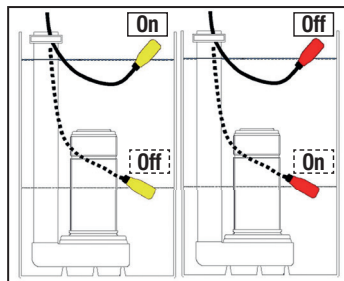
Fix the cable of the float switch so that it is centered between the lower and upper water levels, using a cable clip or a similar device (Illu. 1). The switching angle of the float switch is  $45^\circ$ , so the level difference is approximately 1.4 times the length of the free cable (Illu. 2)

Example: Free cable length 10 cm (3.94 in.);  
Level difference 14 cm (5.51 in.).

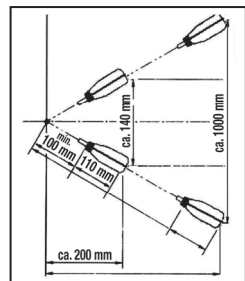
Allow for the bending radius of the H07 cable of 13 cm (5.12 in.).



Illu. 1



Illu. 2



## Components:

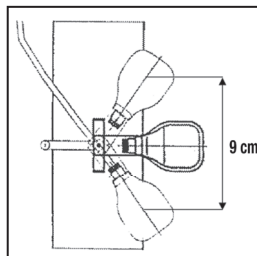
- 1 Hose/worm-drive clamp (Standard  $\text{\O}$ : 100–130 mm / 4–5 in., other sizes available)
- 2 Switch pivot joint
- 3 Connecting cable
- 4 Float switch

### Installation with pivot joint

The pivot joint permits small and precise level differences of only 9 cm. See illustration 3.

The float switch is fixed with the hose clamp in the middle between the upper and the lower water level. Please ensure that the cable does not restrict the movement of the float lever.

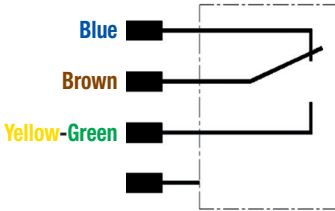
Illu. 3



## Electrical installation

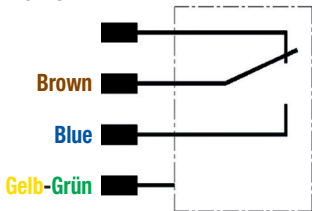
The electrical capacity of the switch is 10 (8) A at 250 V, AC.

Illu. 4



Wire assignment	Switch water feed (yellow) (Illu. 4)	Switch dry running protection (red) (Illu. 5)
Braun	COM	COM
Blau	On when down	On when up
Gelb-Grün	Earth conductor	Earth conductor

Illu. 5

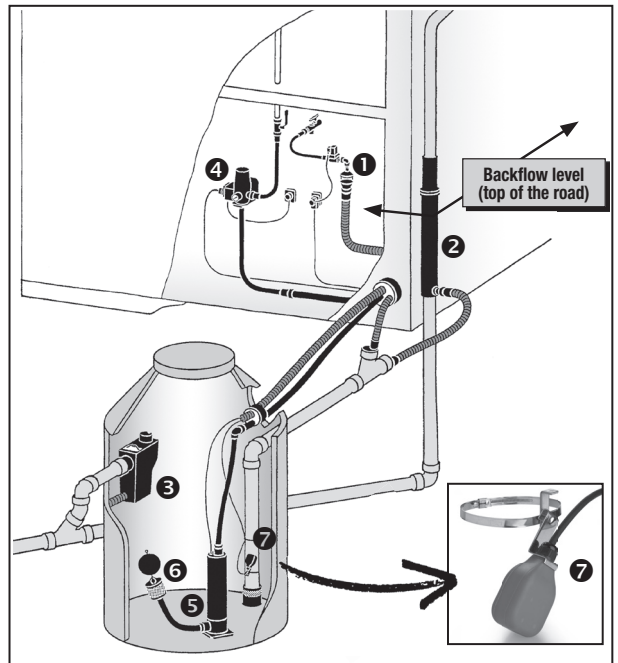


Important: It is possible that water can enter along the cable length and find its way into the switch. It is therefore important not to allow the free end of the cable to enter the water. The connection must be made in a dry area or into a socket protection class IP 65 (or better). It is advisable to use a fault current protection switch.

The operational temperature range is from -25° up to + 60°

Example of a non potable water installation with potable water feed through the open potable water outlet/mains water top-up.

- 1 Open potable water outlet/mains water top-up
- 2 Standpipe filter collector
- 3 Multisiphon
- 4 Automatic switch
- 5 Submersible pressure pump
- 6 Floating suction filter
- 7 Float switch





## Guarantee

The Float switch is manufactured with care and subject to stringent quality controls. In the unlikely event that parts do prove defective despite our strict testing regime, WISY shall repair or replace free of charge any defective part. This does not apply however in the case of damage caused by improper installation or use of force. WISY offers a 2-year guarantee valid from the date of purchase from the specialist retailer. WISY will replace defective materials during this period.



### WISY AG

D-63699 Kefenrod · Oberdorfstraße 26  
Telefon +49 (0) 60 54 - 91 21-0 · Fax +49 (0) 60 54 - 91 21-29  
Internet: [www.wisy.de](http://www.wisy.de) · E-Mail: [info@wisy.de](mailto:info@wisy.de)