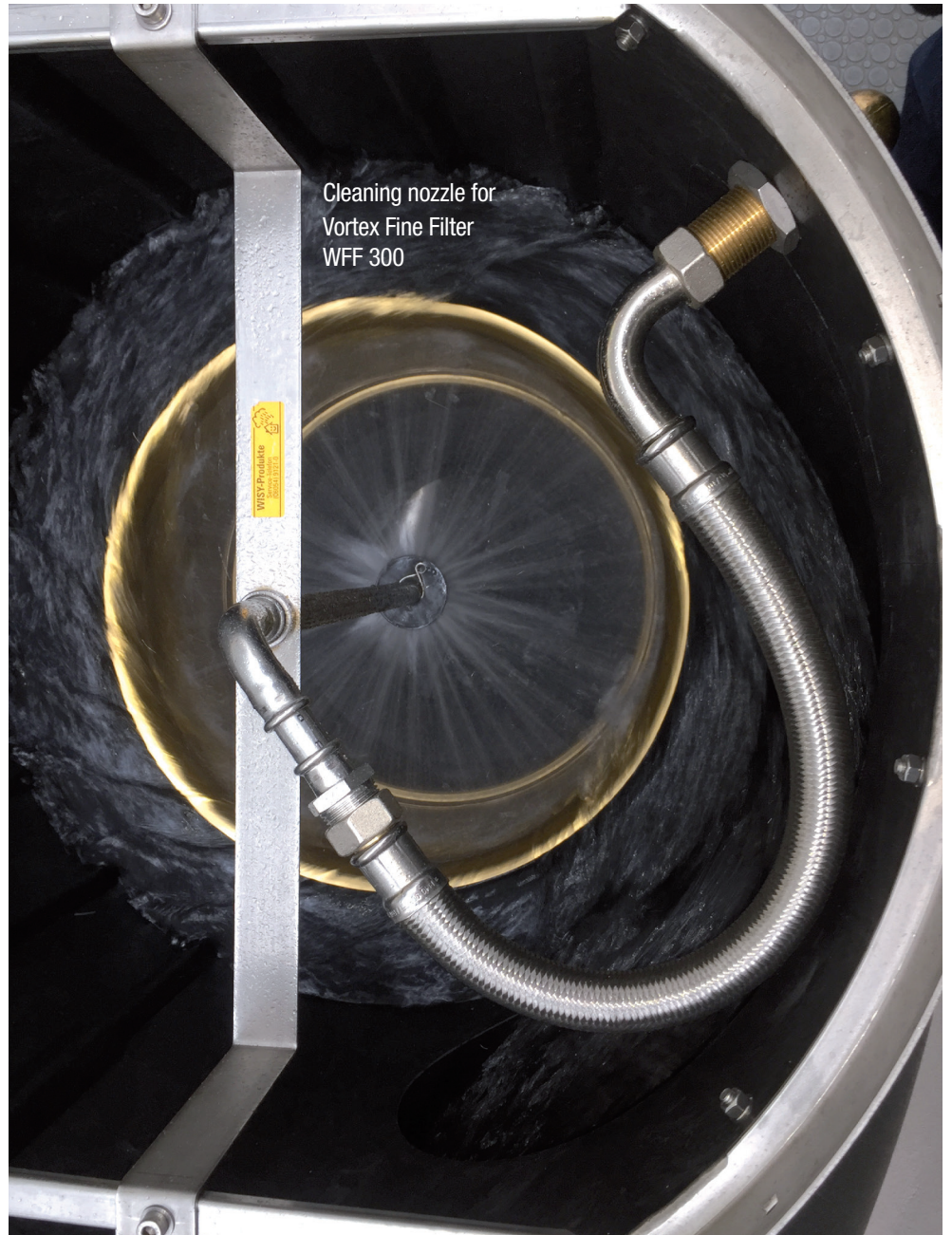




Vortex Fine Filter cleaning nozzle

For demanding tasks in water recycling

- For industrial applications
- Designed for continuous duty
- No additional water consumption, filtered water is used in cleaning process



Cleaning nozzle for
Vortex Fine Filter
WFF 300

Reinigungsdüse für WFF 150
mit Schachtverlängerung

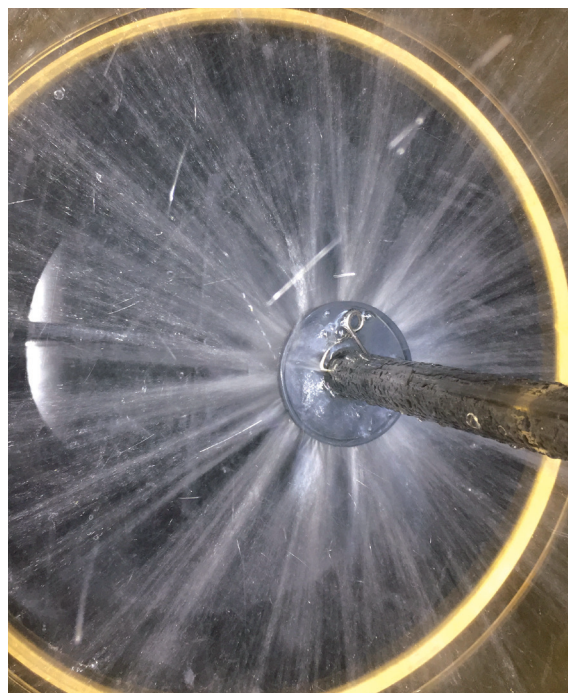


WISY Rainwater Harvesting

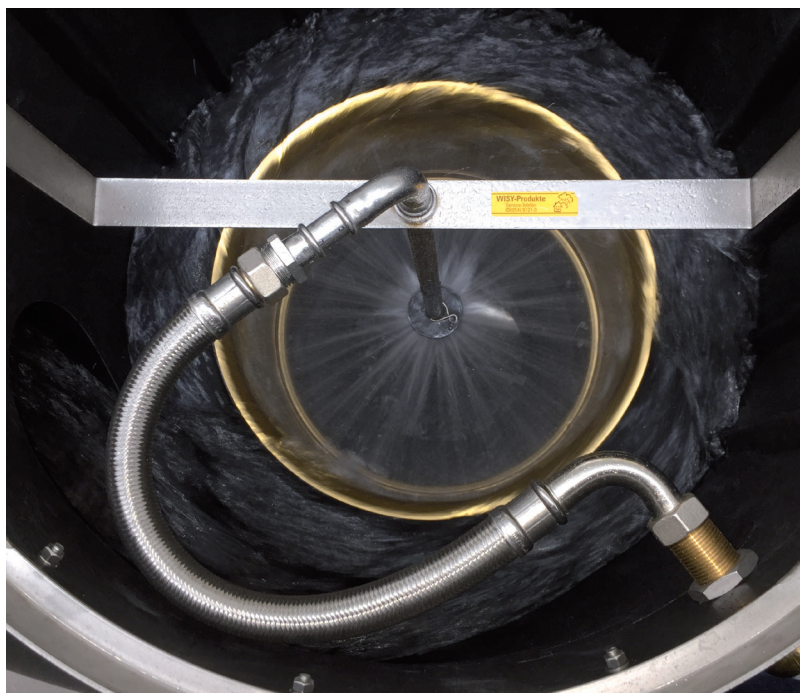
A vortex fine filter equipped with the fully automatic cleaning nozzle is capable of performing extremely challenging tasks in water recycling or separation plants. This nozzle cleans the filter with a fine water spray. The filter surface is kept clean for long periods without any need for maintenance.

The spraying device for the WFF 100 and WFF 150 vortex fine filters is installed in an external shaft

Cleaning nozzle for Vortex Fine Filter WFF 300



extension above the filter. The spraying device for WFF 300 can be installed directly in the filter housing. The cleaning nozzle operates fully automatically. In terms of cleaning, the filter is virtually maintenance-free. The service life of the filter is extended, while the consumption of fresh and wastewater and the energy usage associated with the process are minimized. For operating the cleaning nozzle, the submersible pressure pump Multigo is suitable. (page 32, not included in the scope of delivery). The cleaning nozzle has an 1" Outside thread for the connection to pressurized water.



Cleaning of water coming from the manufacture of concrete blocks located in Clermond Ferrand, France



Technische Angaben:

Erhältlich in drei Ausführungen,
passend für die Wirbel-Feinfilter
WFF 100, WFF 150 und WFF 300

Materialien:

Edelstahl, 1.4301 (V2A)
Metallverstärktes Polyamid
Edelstahlumflochtener Flexschlauch

Anschlußgewinde: 1 Zoll AG

Arbeitsdruck: 4 - 6 bar



WISY AG
D-63699 Kefenrod, Oberdorfstraße 26
Telefon +49 (0) 60 54-91 21-0

Fax +49 (0) 60 54-91 21-29
Internet: www.wisy.de
E-Mail: info@wisy.de